



Description

EUROMED devil's claw extract is a standardized herbal extract of *Harpagophytum procumbens* DC secondary root. It belongs to the family of *Pedaliaceae* and comes exclusively from southern Africa, where it grows in savanna and deciduous forests. Its natural habitat is steppe-like areas of the Kalahari desert in Namibia and parts of adjacent South Africa, Botswana, Angola and Zimbabwe. Nowadays devil's claw is being cultivated as a medicinal plant.

Chemistry

Devil's claw contains mainly iridoid glycosides (up to 3 %). Further constituents are glycosides of the flavonoids kaempferol and luteolin, chlorogenic acid and cinnamic acid, the phenylethanoid acteosid, quinone, harpagoquinone, triterpenes like ursolic and oleanic acid and derivatives, phytosterols like sitosterol and stigmasterol, and esters; sugars, mostly in form of stachyose, sucrose and monosaccharides. The secoiridoid glycoside fraction, consisting of harpagoside, procumbide, harpagide and 8-para-coumaroyl-harpagide, is supposed to contribute to the pharmacological actions and clinical efficacy.

Indications

Devil's claw extract is a herbal preventive and therapeutic agent for painful arthritis (osteoarthritis) and tendinitis. Treatment results in relief of pain and improves functionality and mobility. It gives most patients relief from symptoms within the first few weeks of treatment.

Contraindications, interactions and side-effects

Due to the postulated stimulation of gastric acid secretion of bitter tasting preparations, devil's claw is contraindicated in patients with gastric and duodenal ulcers. There are no known interactions with drugs usually prescribed. Mild gastro-intestinal disturbances may occur in sensitive individuals especially at higher dosages. Side-effects are rare when the standardized extract is taken.

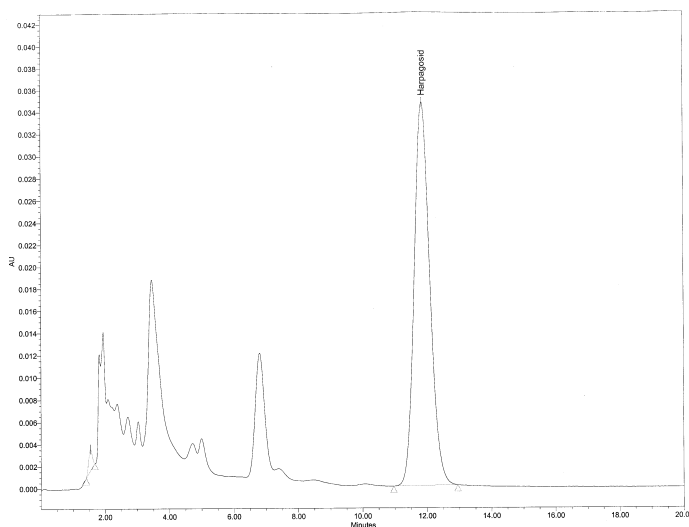
Therapeutic Safety

Devil's claw extract is notable for its particularly high level of clinical safety, no serious or major adverse events have been reported.



EUROMED Analytical Specifications

- Denomination >> DEVIL'S CLAW DRY EXTRACT
- Used plant drug >> *Harpagophytum procumbens* DC
- Used plant parts >> Root
- Aspect >> Fine powder, light brown colour, aromatic odour
- Identification >> TLC
- Loss on drying >> Max. 5.0%
- Assay
 - Type 1 >> Harpagoside min. 1.0% (HPLC). Total glycoiridoids as harpagoside min. 5.0% (UV-vis)
 - Type 2 >> 3.0 – 4.0% total iridoids, calculated as harpagoside (Ph. Franç., UV-vis); 1.6 – 2.2% Harpagoside (Ph. Franç., HPLC)
- Microbiology >> Acc. Ph. Eur., 5.1.4, cat. 3B



HPLC fingerprint of EUROMED devil's claw dry extract

Selected References

- >> ESCOP : Monograph: Harpagophyti radix (Devil's claw) European Scientific Cooperative on Phytotherapy. Elburg (1996)
- >> Hagers Handbuch der Drogen und Arzneistoffe Springer-Verlag Berlin Heidelberg (2004)
- >> Schmidt, M. Et al. Anbau der Teufelskralle. DAZ 138 4540-9 (1998).
- >> Devil's claw extract: for the treatment of joint ailments. Ed. by EUROMED
- >> www.euromed.es



EUROMED S.A.

Carrer Rec de Dalt 21-23
Poligon Can Magarola
E-08100 Mollet del Vallès
Barcelona (Spain)
Tel. (34) 93 544 0110
Tel. (34) 93 544 0111
www.euromed.es

EUROMED U.S.A., Inc.
11214 Club House Road
Nevillewood, PA 15142
Tel. +1-412-279 88 08
Fax +1-412-279 88 09
joev@euromedusa.com

EUROMED France
95 Route du Morgon
69 400 Gleize
Tel. +33(0)4 74 60 53 52
Fax +33(0)4 74 60 54 65
hkergoisen@wanadoo.fr

EUROMED Canada
17240 26A Avenue
Surrey, British Columbia V3S 0E6
Tel. +1-604-535 44 03
Fax +1-604-535 98 51
euromedcanada@shaw.ca

EUROMED Germany
Lütticher Str. 5
53 842 Troisdorf
Tel. +49-221-8998691
Fax +49-221-8998693
jklapperich@euromed.es